



FB-INNOTECH

*Luxury Interior Decor*

---



*"The artwork does not lay only in the object itself, but also in what surrounds it, the voids, as well as the spaces. Aspiring to eternity"*

*To create something unique, of exceptional quality, made of the rarest and most marvelous materials.*

*To go beyond what is considered possible.*



FBINNOTECH

*in 2018*

*Gioacchino & Fabio  
Barletta*

*Founded*

**FB Innotech S.r.l.**



CEO Gioacchino Barletta



CEO Fabio Barletta

Boundless Elegance for Luxury Interior Design

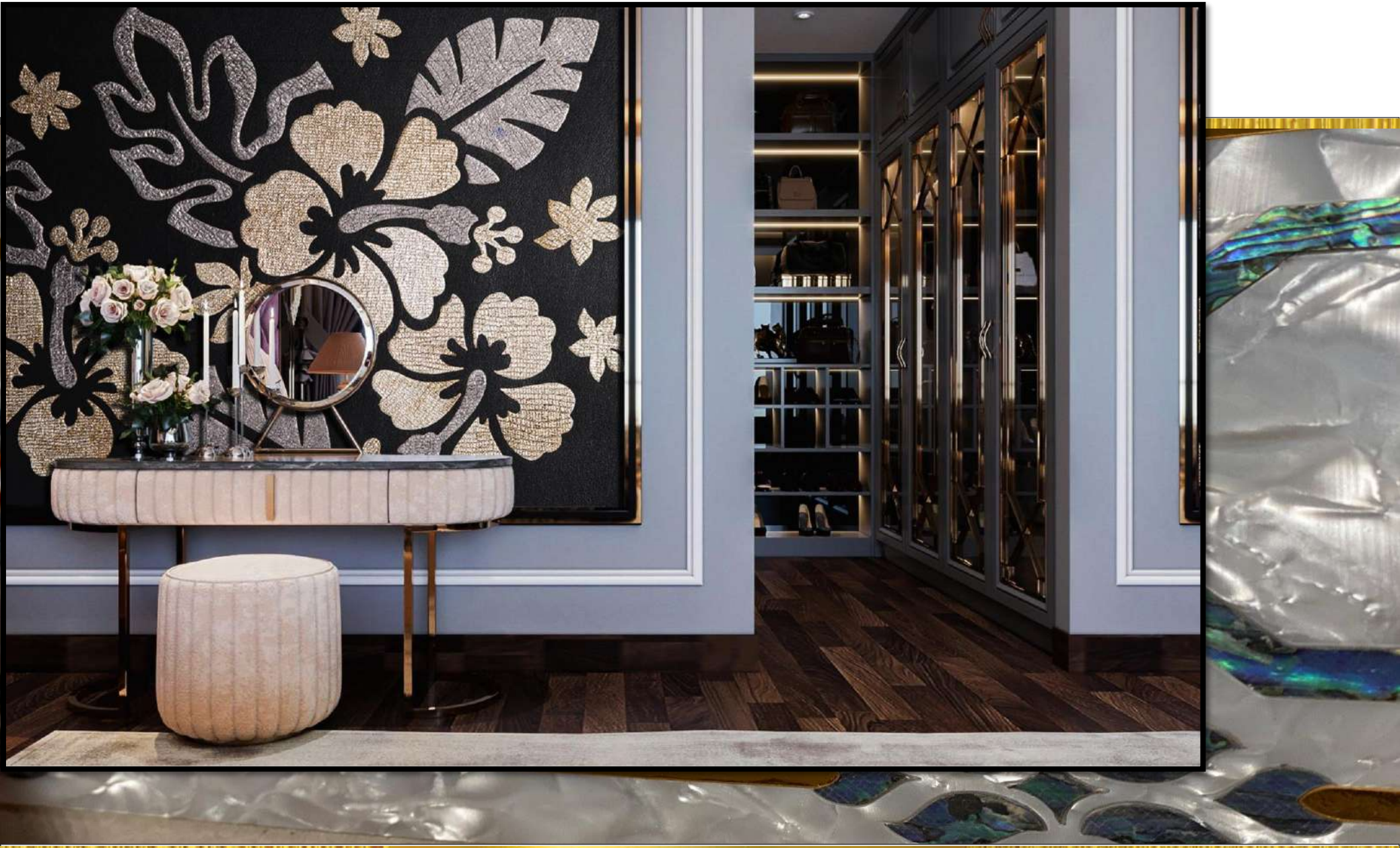


a product capable of revolutionizing all market standards

Our brand FBinnotech stands out for its boundless elegance that we bring to the world of luxury interior design. We are the epitome of sophistication and exclusivity, offering exquisite wall covering solutions that transform spaces into true masterpieces.

With our wide range of products, including leather and mother-of-pearl coverings, we create unique and stunning atmospheres that leave an indelible mark in the spaces. Our attention to detail, craftsmanship, and use of premium materials allow us to deliver elite projects that surpass every expectation.

We are partners with designers, architects, and industry professionals who share our passion for excellence. With FBinnotech, it is possible to turn every space into a work of art, where luxury, comfort, and style blend into a singular sensory experience.



Architecture

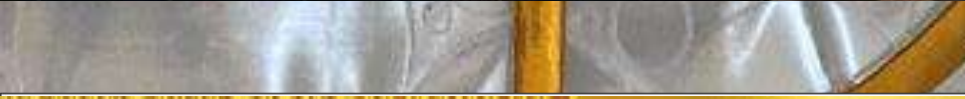
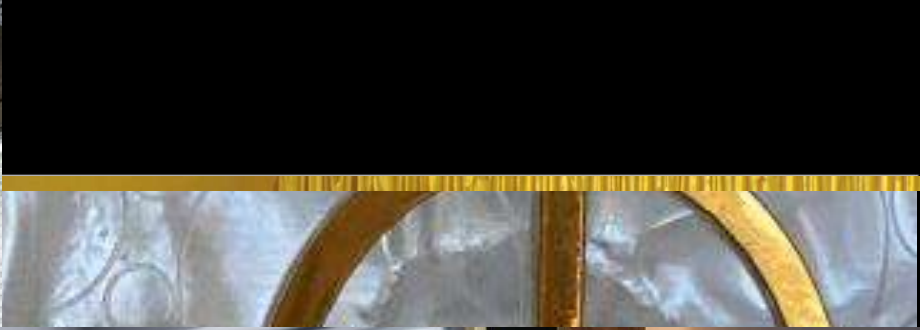
*A product  
capable of  
revolutionizing  
all known  
standards*

*Uniqueness and customizability of our products, this is the base concept for the Company*



















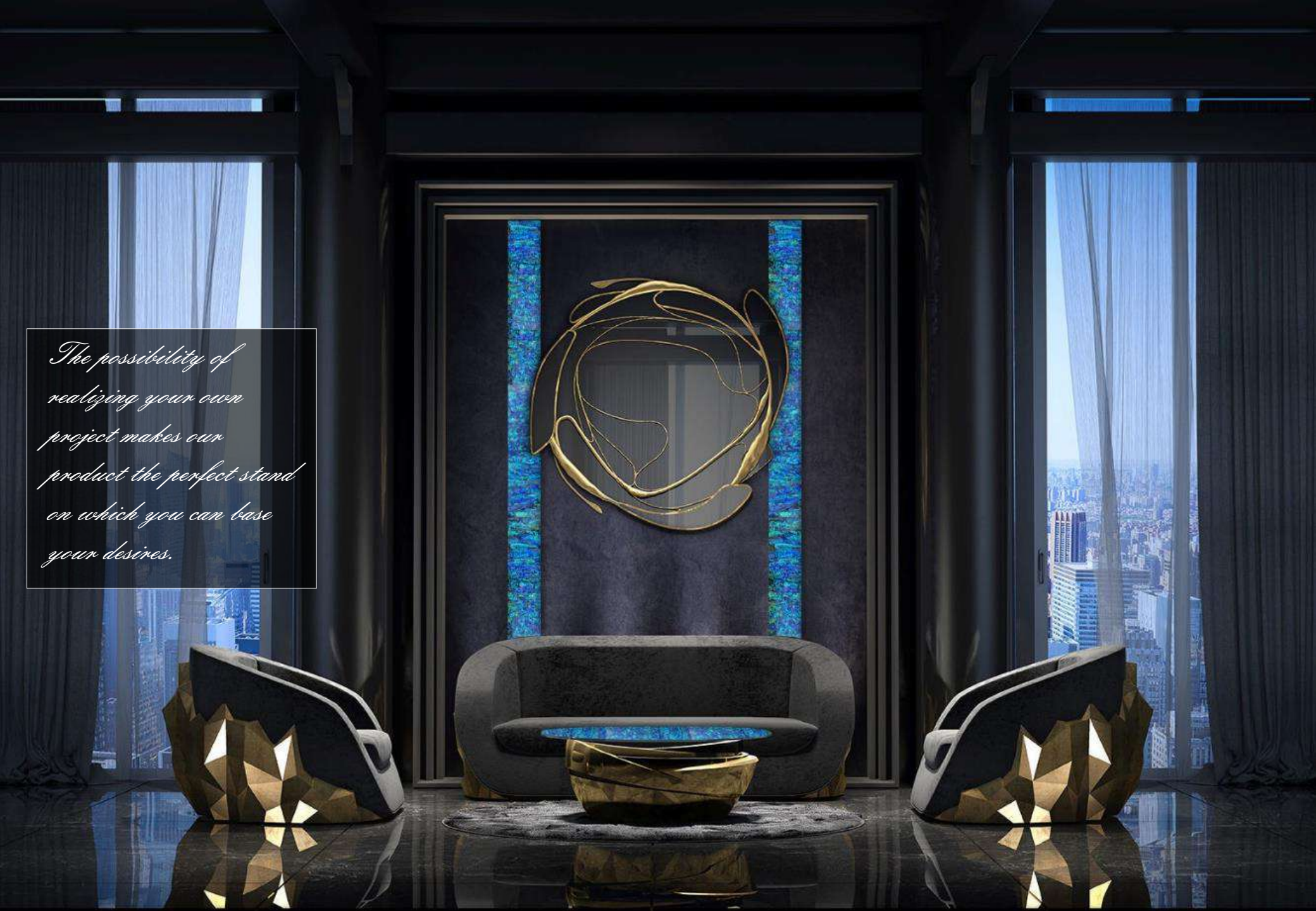
*We cooperates  
with the foremost  
design and  
architectural  
international  
studious.*





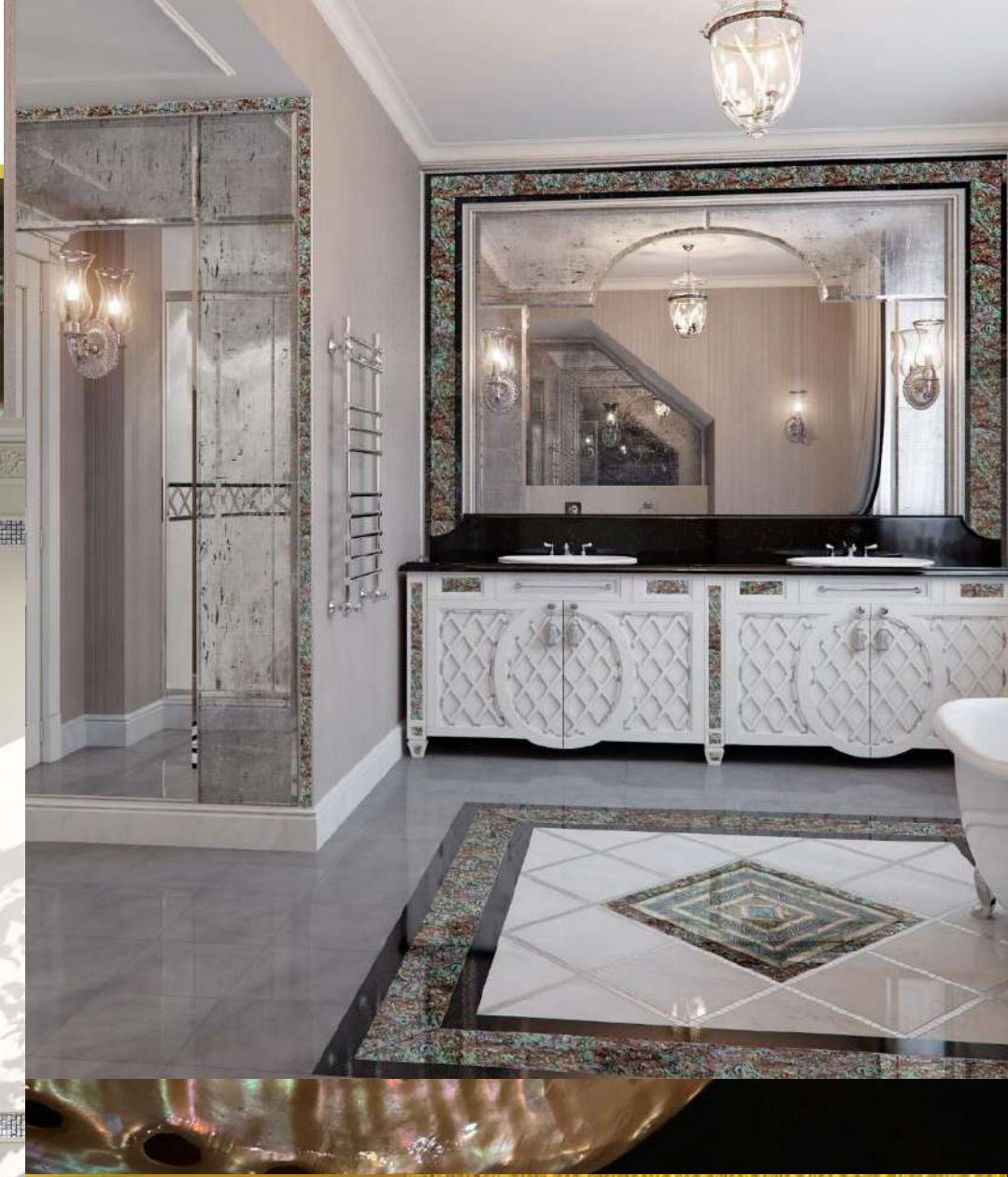


*The possibility of  
realizing your own  
project makes our  
product the perfect stand  
on which you can base  
your desires.*





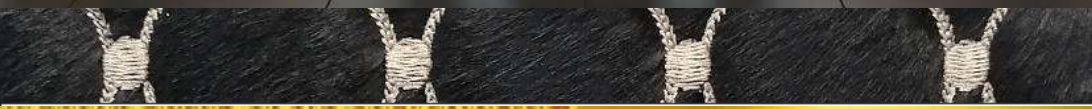






- 5 | TRAINING ROOM
- 4 | GALLERY
- 3 | CONFERENCE ROOM
- 2 | RESTAURANT
- 1 | RECEPTION

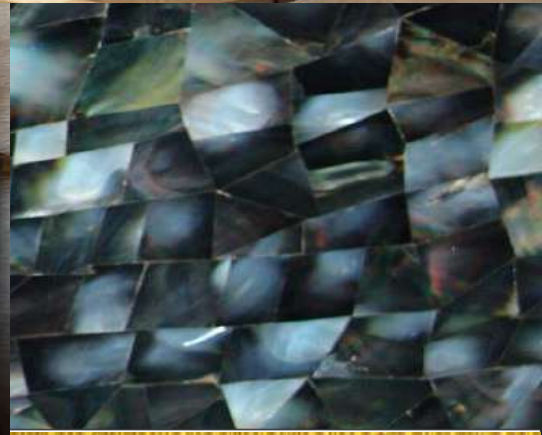
↑ 2  
↓





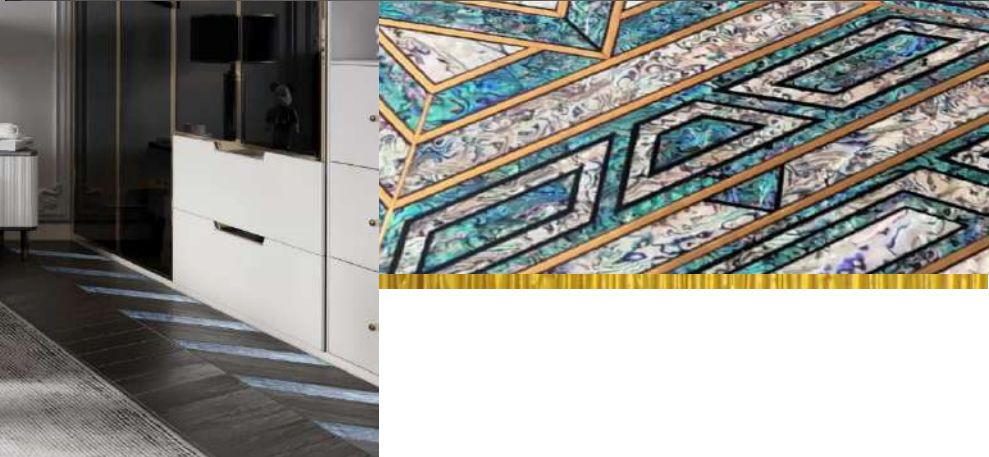
*"Going beyond what  
is considered possible"*









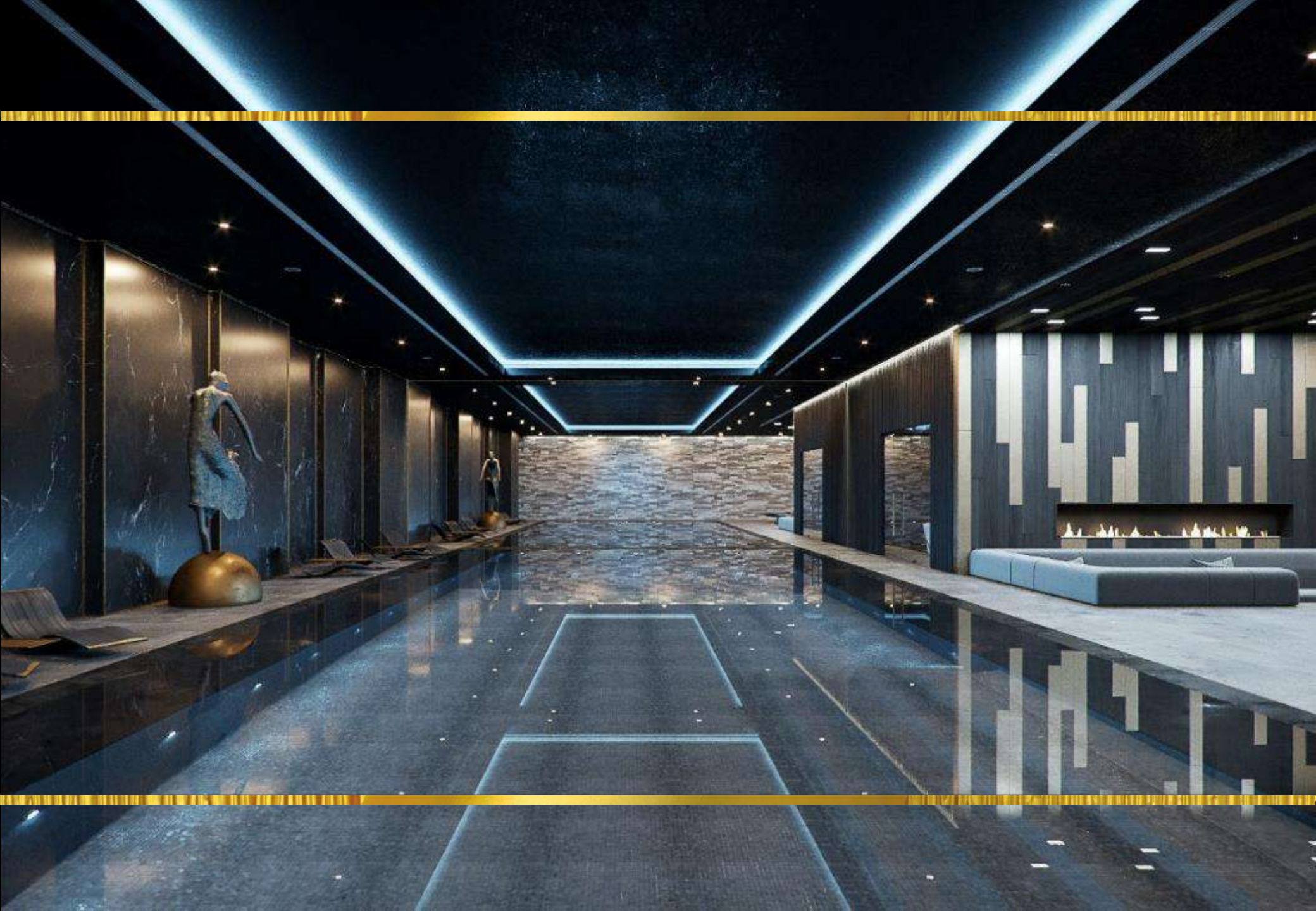












*"Mother of pearl  
Going back to the  
origin"*

*"here it is born, and it  
continues its course,  
preserved through time  
by its natural habitat:  
water"*







*"A never before seen  
encounter between  
mother-of-pearl and  
carbon, capable of giving  
distinguished artwork,  
with an elegant look and  
a profound sense for the  
material."*

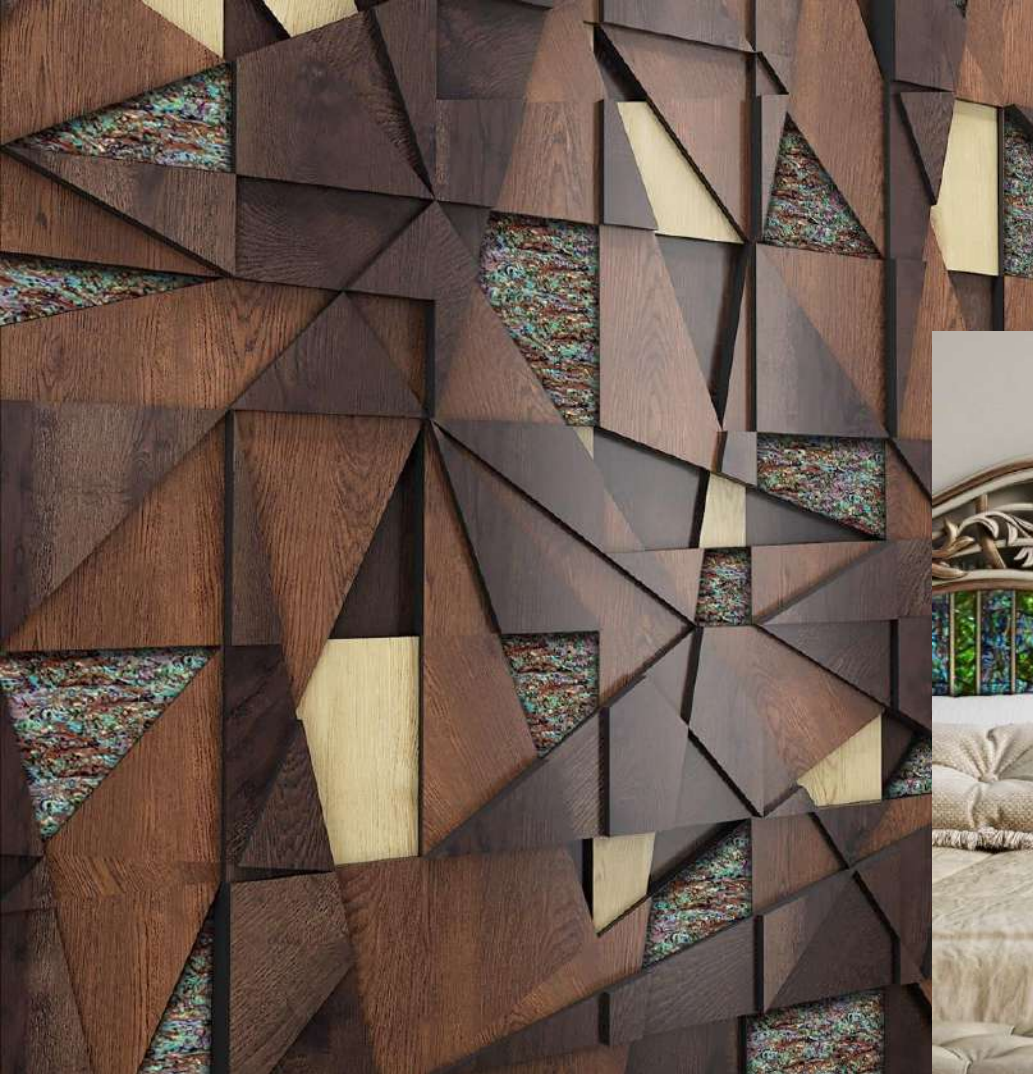
*"The architecture is the bones of a room, the furnishings are the heart, and the art is the soul. Let's join heart and soul together"*

*The complete customizability of the product allows deciding its function from its shape*





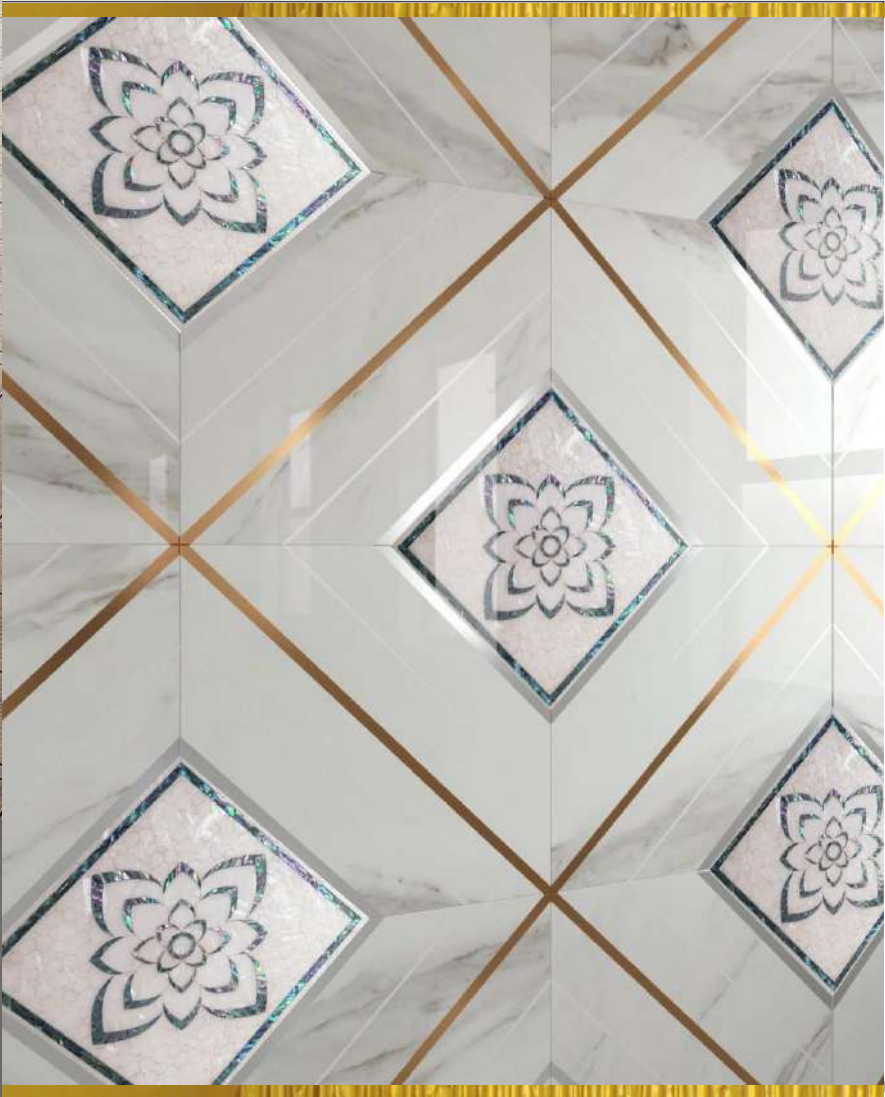




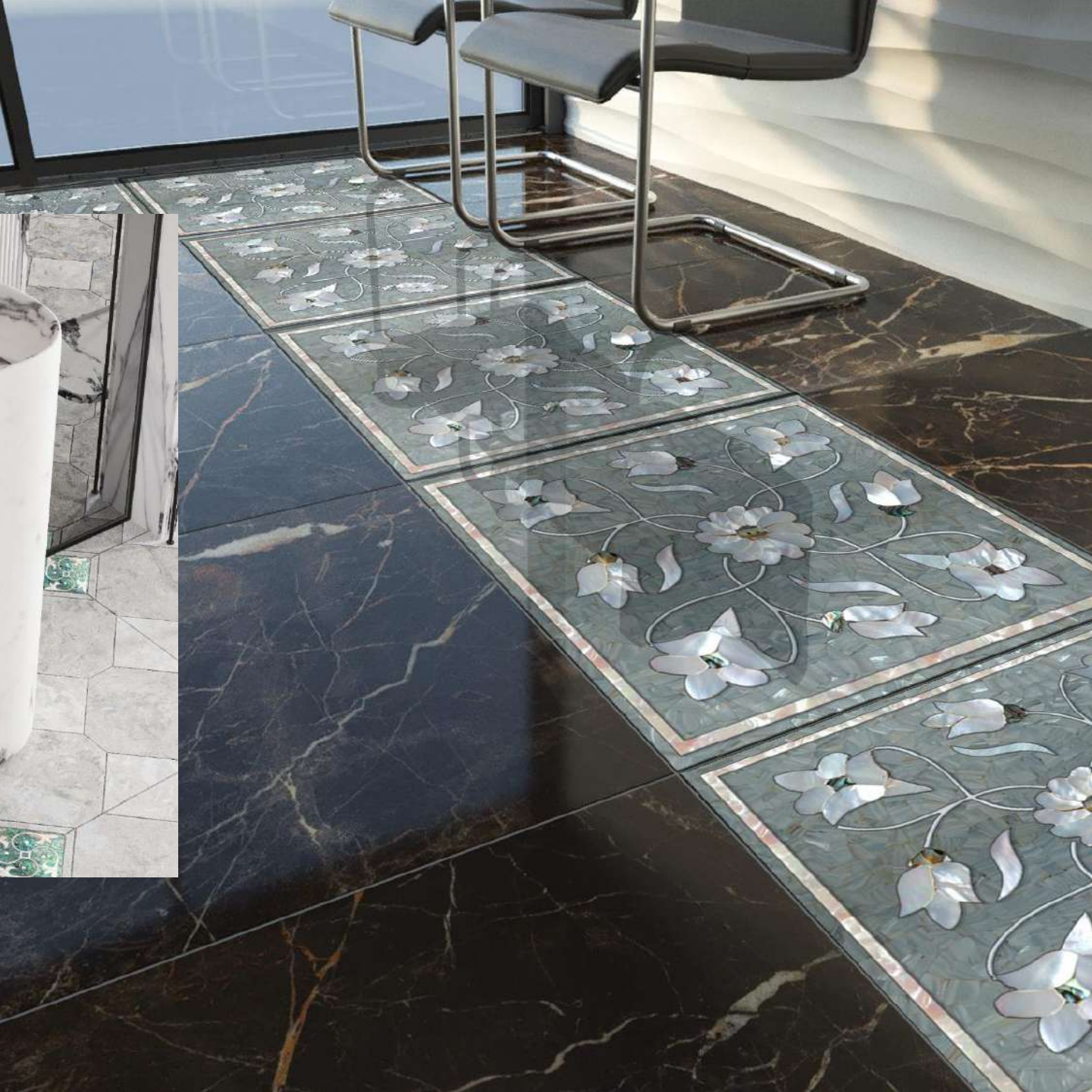


*An encounter  
between the finest  
manufactures,  
where elegance  
and prestige  
merge into one.*











*"Character and elegance. Refined decor utilizing small spaces"*  
*The main advantage lies in allowing you to have a U.N.I.D.W.E space and a broader interior.*

# YACHT & JET








*A careful selection of the best processes born of two unique products, in a union between earth and water.*





*"Who has experienced flight will walk looking at the sky, because he has been there and there he wants to return. Create your room in the sky"*

*Lightness, the basis for every creation, without giving up luxury.*





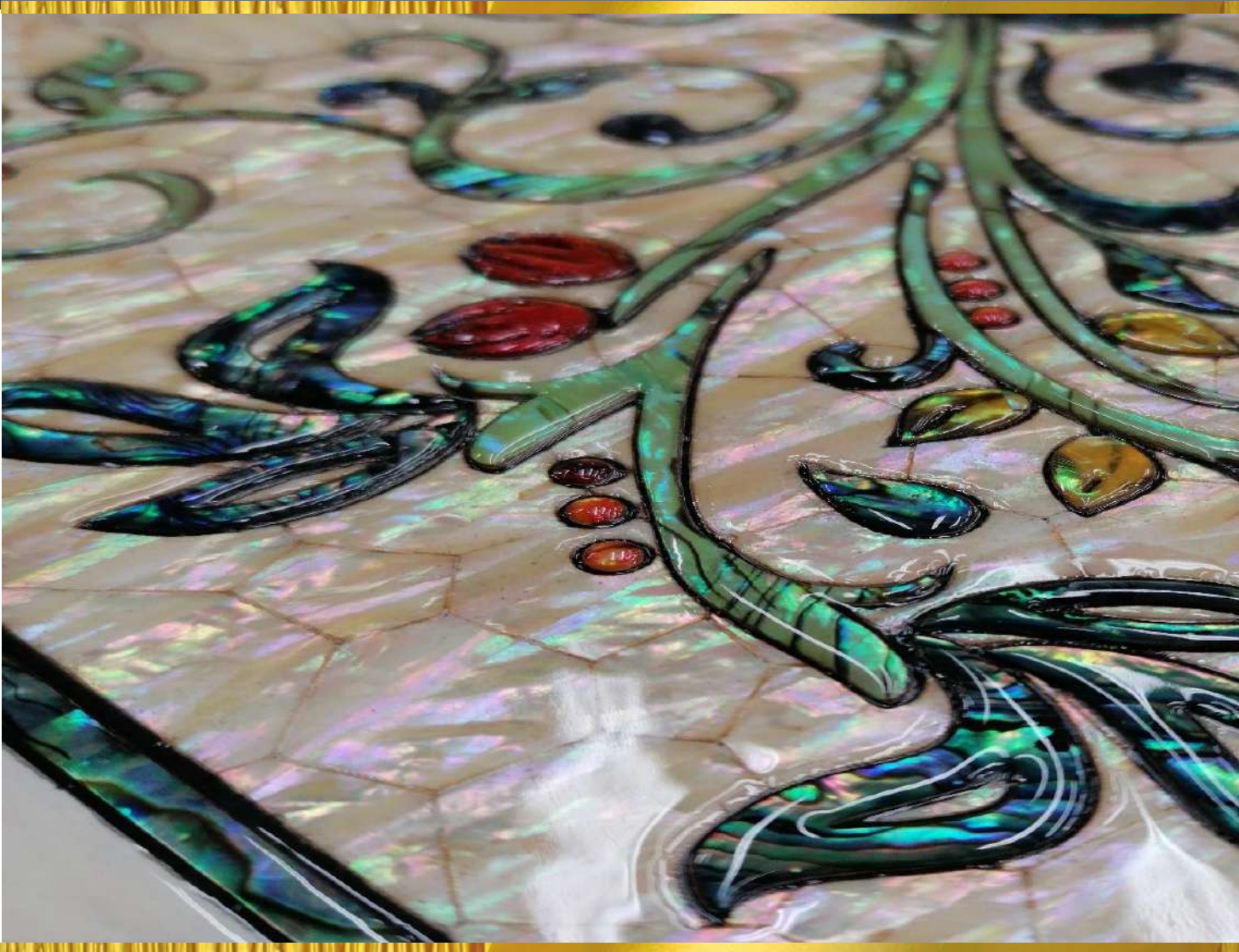
# *The natural origin of beauty*



## *Mother of pearl*

*Widely used since ancient times, it can be found in artifacts belonging to ancient Egypt and the Sumerians. From east to west, its beauty and special properties were always appreciated. Among those, there is the protection from harmful influences and the conversion of negative energy to positive.*

# *Mosaic relief*



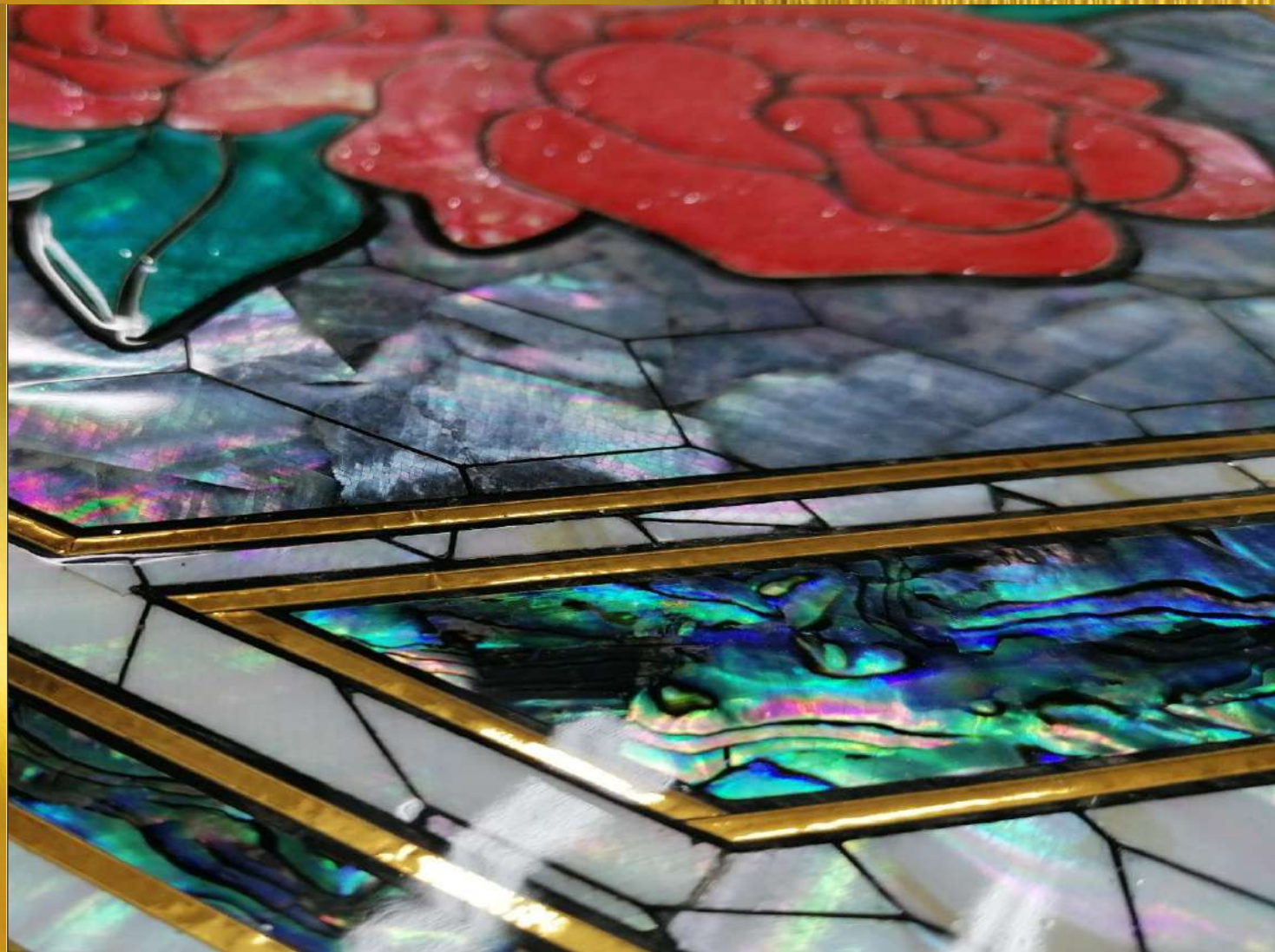
## *Nettuno*

*Incised and hand-laid mother of pearl, following the technique of the mosaic, implemented with reliefs created on every insert*

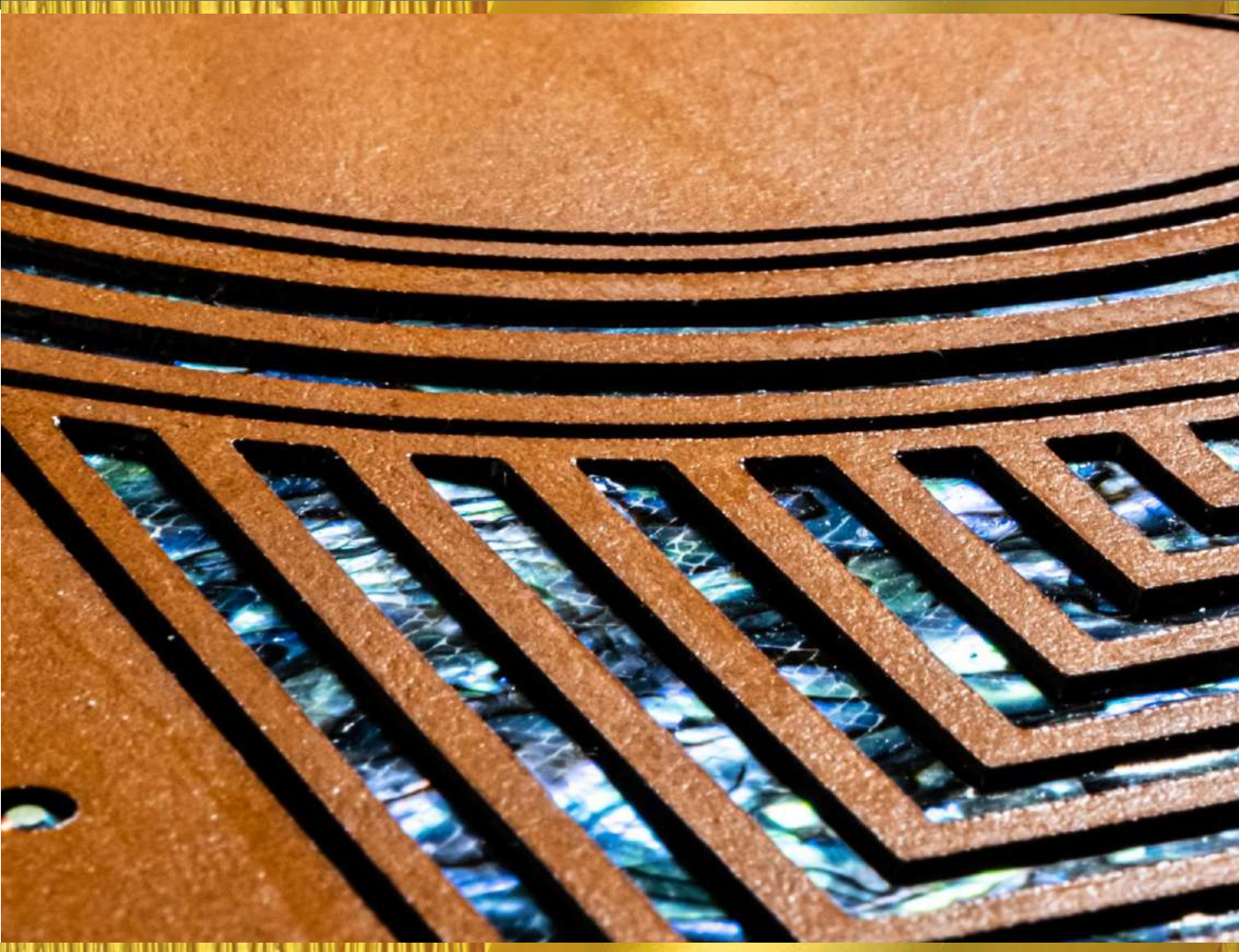
# Mosaic

## Giove

*The manual skills and innovative techniques allow us to realize the most complex of mosaics, that being backlighted, have their natural characteristics of the material emphasized.*



# *Embedding*



## *Vulcano*

*Coming from the deft hands of our masters that embed precious materials into the leather, here there are our creations of high prestige and assured effect.*

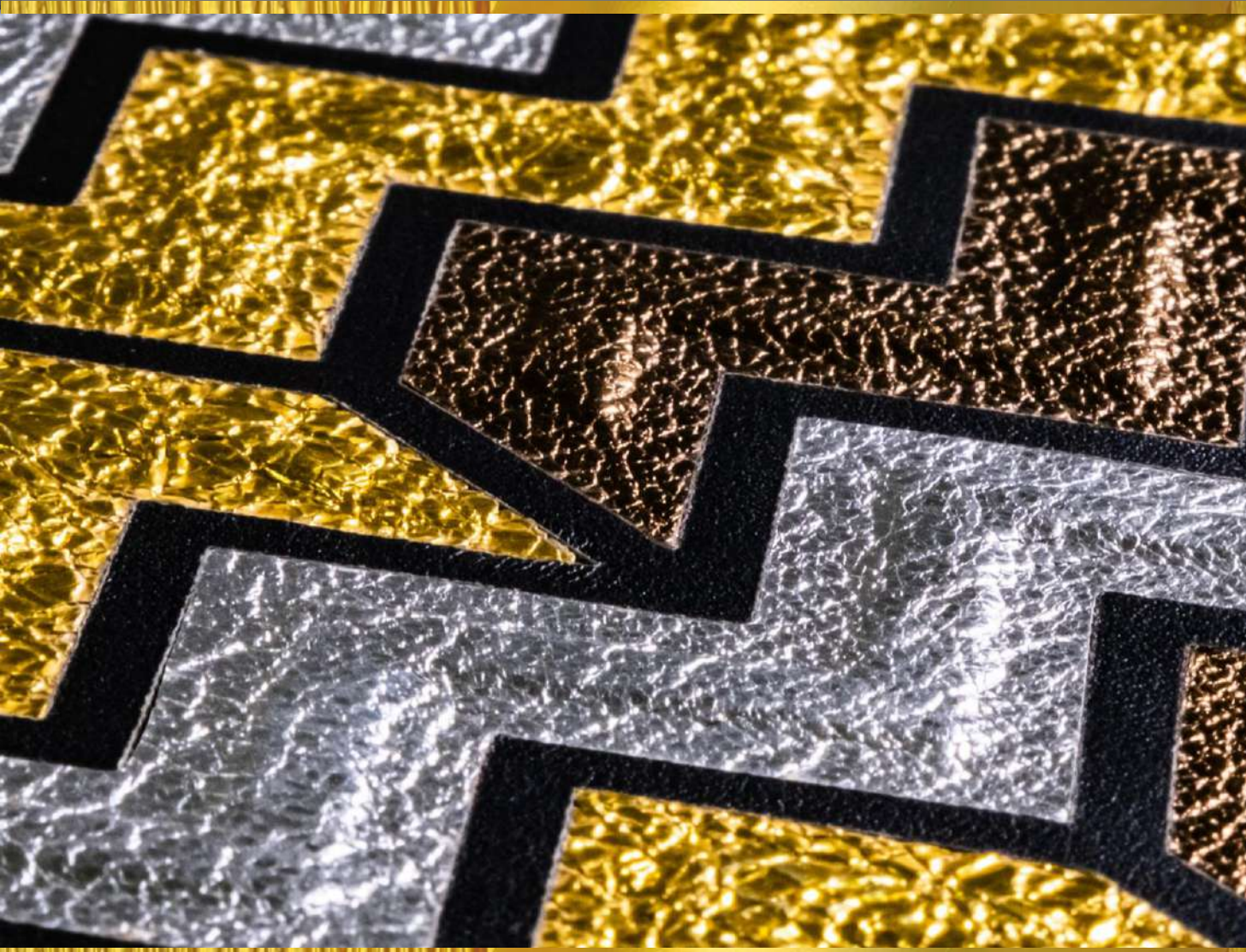
# *Embroidery, emotion to the touch*

## *Atena*

*Embroidering on leather  
allows us to achieve  
great feel to the touch,  
with a strong impact,  
softness, and elegance.*



# *Inlay*



## *Giunone*

*Our master craftsman avail themselves with the technique of the inlay, born in the far 1440, to compose with varied kinds of leathers.*



# *Relief Technique*

*Diana*

*Through the relief  
technique we highlight  
the commissioned  
shapes and designs.*



# *Laser Incision*



## *Apollo*

*We utilize the  
last-gen machinery to  
apply our laser incision,  
creating complex designs  
and geometries of great  
effectiveness.*







CHARACTERISTICS

## SHAPE AND DIMENSIONS

Differently from many other materials, leaflat® can change dimensions greatly in thickness (affecting resistance), length and width.

A standard production utilizes the established dimensions of 1200x1200mm, but if necessary, different dimensions can be provided.

## MINIMUM THICKNESS

With its 1 to 2 mm thickness, leaflat® allows the overlay with other preexistent coverings without affecting structural weight.

This makes it ideal for buildings in seismic areas, or to lighten building developed vertically, like skyscrapers.

## MINIMUM WEIGHT

The most singular characteristic of leaflat® is certainly its lightness.

Thanks to the carbon substrate, of any thickness, we obtain meter square weights markedly inferior to other materials used for covering.


## UTMOST CUTTING PRECISION

leaflat® materials, colors and finishes can all be customized.

The customization happens in the production phase.

Due to the high cutting precision, it is possible to perfectly install the components to form any design.

## MINIMAL ENVIRONMENTAL IMPACT

During the entirety of the production process, from the storage to the application,  leaflat® displays a low environmental impact, in virtue of its chemical characteristics and the chosen processes utilized during its creation.

## CUSTOMIZATION

One of the foremost aspects is surely the infinite customizability of the product. The client is free to supply any kind of design and request colors and materials to insert into the product. The floor and/or coating is capable of taking any shape or dimension desired. The customization of the design or print can take place on one panel or on many consecutive ones, which later will become a single design.

## MAXIMUM SAFETY

A product with these features can do nothing but warrant for maximum safety. Thanks to his high tolerance to fire, it possesses an elevated fireproof coefficient compared to other covering materials. It was also certified in the nautical field for every kind of vessel.

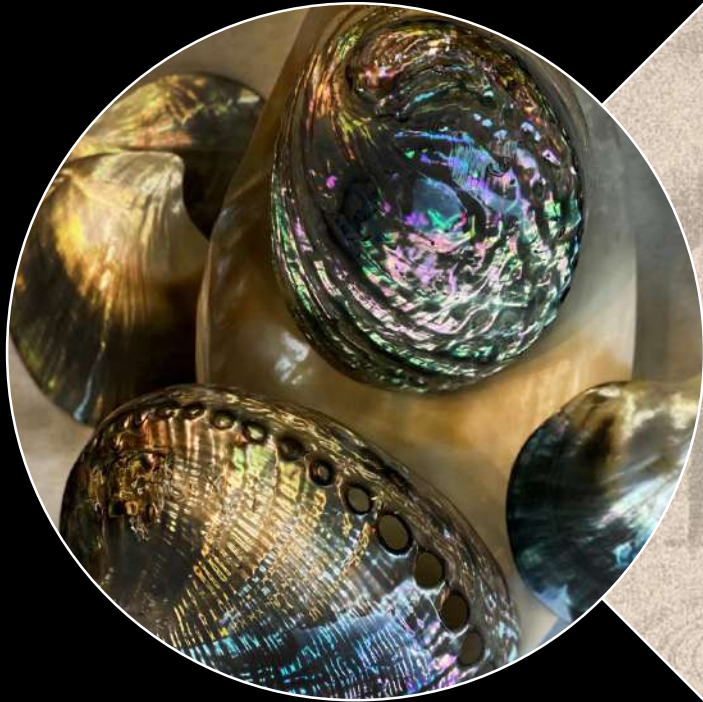
## MAXIMUM RESISTANCE

Thanks to the carbon base, leaflat® does not present only lightness as a feature, but also great resistance to bending. This unique characteristic makes it possible to use the product both as a structural element, as well as a simple covering decor. This resistance allows us to use fragile and light materials, like mother-of-pearl.

## REDUCTION OF COSTS

Minimal presence of leftovers after installation, since it is possible to supply the panels custom shaped.

- No need for the client to store the product.
- Extremely high «time to market» and production management «just in time»
- Easy and low-cost repair of damages.
- Limited need for maintenance.
- Easy cleaning.
- A distinctly advantageous balance between costs/benefits in the medium/long period, both for the constructor and the final customer.
- Reduction on costs due to installation materials, the installation itself, and replacements.
- No leftovers of product regarding the surface needed to be covered.
- Ongoing availability.



**FB INNOTECH srl**

[www.FBinnotech.com](http://www.FBinnotech.com)  
San Miniato (PI)  
ITALY



*Interior Decor destined for the future*